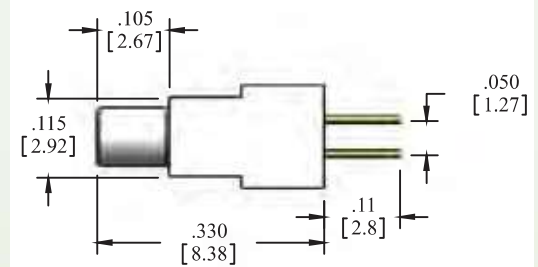
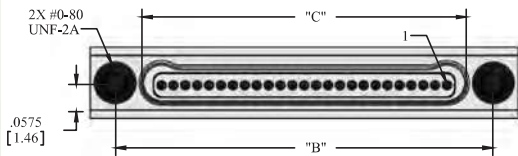
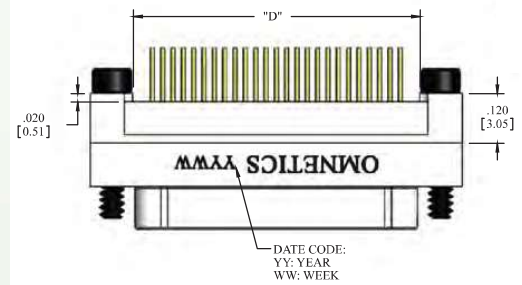
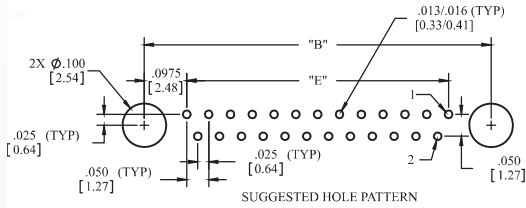


Single Row Vertical Thru-Hole (TYPE V2)



English (IN)

CONTACTS	"A"	"B"	"C"	"D"	"E"
5	0.400	0.295	0.184	0.195	0.100
9	0.500	0.395	0.284	0.295	0.200
15	0.650	0.545	0.434	0.445	0.350
21	0.800	0.695	0.584	0.595	0.500
25	0.900	0.795	0.684	0.695	0.600
31	1.050	0.945	0.834	0.845	0.750
37	1.200	1.095	0.984	0.995	0.900
51	1.550	1.445	1.334	1.345	1.250

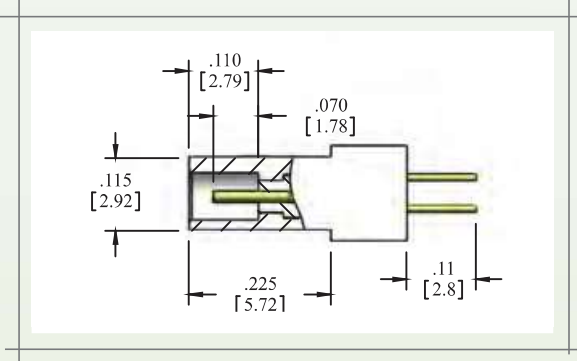
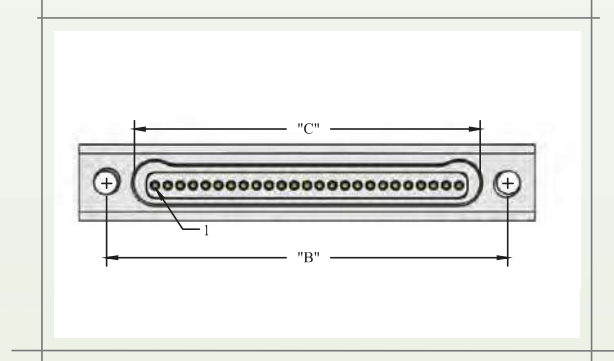
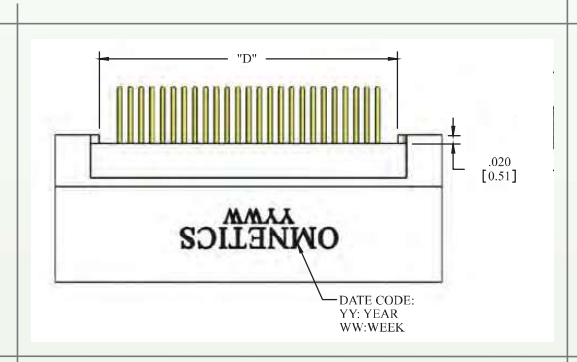
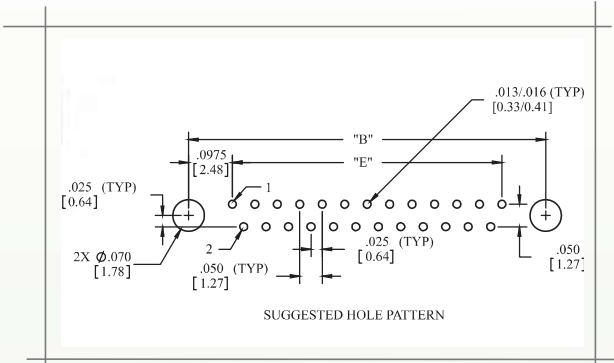
Metric (mm)

"A"	"B"	"C"	"D"	"E"
10.16	7.49	4.67	4.95	2.54
12.70	10.03	7.21	7.49	5.08
16.51	13.84	11.02	11.30	8.89
20.32	17.65	14.83	15.11	12.70
22.86	20.19	17.37	17.65	15.24
26.67	24.00	21.18	21.46	19.05
30.48	27.81	24.99	25.27	22.86
39.37	36.70	33.88	34.16	31.75

Vertical Thru-Hole Type V2

Bi-Lobe®

Single Row Vertical Thru-Hole (TYPE V2)



76

English (IN)

CONTACTS	"A"	"B"	"C"	"D"	"E"
5	0.400	0.295	0.185	0.195	0.100
9	0.500	0.395	0.285	0.295	0.200
15	0.650	0.545	0.435	0.445	0.350
21	0.800	0.695	0.585	0.595	0.500
25	0.900	0.795	0.685	0.695	0.600
31	1.050	0.945	0.835	0.845	0.750
37	1.200	1.095	0.985	0.995	0.900
51	1.550	1.445	1.335	1.345	1.250

Metric (mm)

"A"	"B"	"C"	"D"	"E"
10.16	7.49	4.70	4.95	2.54
12.70	10.03	7.24	7.49	5.08
16.51	13.84	11.05	11.30	8.89
20.32	17.65	14.86	15.11	12.70
22.86	20.19	17.40	17.65	15.24
26.67	24.00	21.21	21.46	19.05
30.48	27.81	25.02	25.27	22.86
39.37	36.70	33.91	34.16	31.75