

## ■ Mounting Hardware and Tools

Omnetics Connector Corporation's entire line of Bi-Lobe® & MIL-DTL-32139 connectors are available retention and/or mounting features that most commonly utilize a #0-80 screw. The retention screws which are captive inside the metal housing act as a positive locking mechanism to hold a mated pair of connectors together in the harshest of environments. These retention screws come with a standard hex head of .050" (1.27mm). Our panel mount and printed circuit board mountable versions (SMT & Thru-Hole) of our Bi-Lobe® & MIL-DTL-32139 nano connectors come with pre-threaded mounting holes ready to accept #0-80 screws. These screw also come with a standard hex head of .050" (1.27 mm). We understand that the mounting screws and tools for these U.S. standards are not easy to procure around the globe. For your convenience we have created some standard part #'s and keep stock of various tools and screw sizes. Please contact Omnetics or your local authorized distributor for more information on these parts.

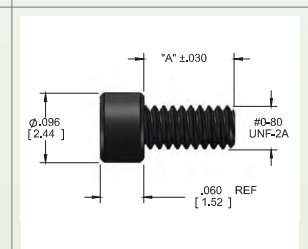
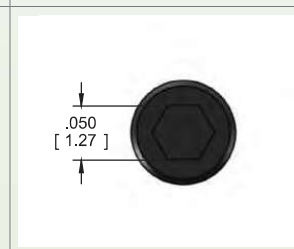


### ■ Tool Part Numbers

- PART NUMBER      DESCRIPTION
- D3665-001      Ball point driver
- S0627      .050" Hex wrench

### ■ Mounting Screw Part Numbers

PART NUMBER	DESCRIPTION
■ D4193-125	Thread Length- 3.18 mm / .125"
■ D4193-156	Thread Length- 3.97 mm / .156"
■ D4193-187	Thread Length- 4.76 mm / .186"
■ D4193-250	Thread Length- 6.35 mm / .250"
■ D4193-312	Thread Length- 7.94 mm / .312"
■ D4193-375	Thread Length- 9.53 mm / .375"



### ■ Part No

- D4193-125
- D4193-156
- D4193-187
- D4193-250
- D4193-312
- D4193-375

### ■ English (IN) "A"

- 1/8      .125"
- 5/32      .156"
- 3/16      .186"
- 1/4      .250"
- 5/16      .312"
- 3/8      .375"

### ■ Metric (mm) "A"

- 3.18
- 3.97
- 4.76
- 6.35
- 7.94
- 9.53